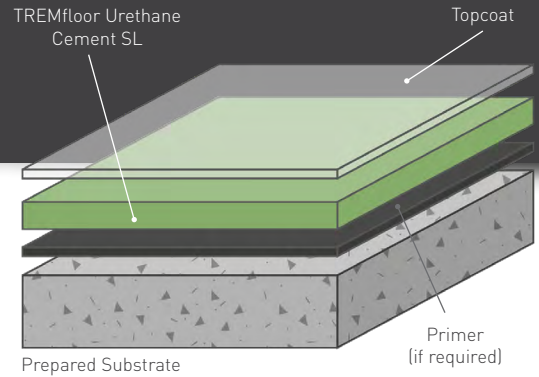


# TREMfloor Urethane Cement SL (1/8")

Self-Leveling Urethane Cement System



A HACCP International certified urethane cement system with a smooth matte finish, ideal for dry manufacturing areas. Broadcast and seal for wet areas such as beverage processing plants or bathrooms.



### Fast Return-to-Service:

Cures in under 24 hours to help minimize occupant disruption.



### Seamless:

No joints or seams to harbor germs, dirt or debris.



### Polygiene® Antimicrobial:

Contains a silver ion antimicrobial additive to protect the surface.



### Lifecycle Cost Efficiencies:

Offers significant lifecycle cost savings compared to tile or acid brick.



### Unaffected by MVT:

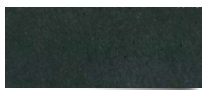
Allows moisture to move through the material at a safe rate.



### Low Odor:

Low odor installation, non-toxic, and phthalate-free formulation.

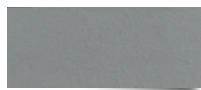
### Available Colors:



Black



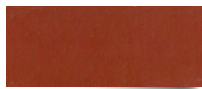
Dark Gray



Common Gray



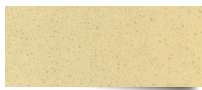
Tan



Red



Green



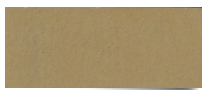
Cream\*



Blue\*



Safety Yellow\*



Khaki\*

\*Special Order Color

### COVERAGE RATES: (61 LB KIT)

63 sq ft/kit at 1/8"

### COMPRESSIVE STRENGTH:

ASTM C 579 >7,250 psi

### TENSILE STRENGTH:

ASTM C 307 1,740 psi

### COEFFICIENT OF THERMAL EXPANSION:

ASTM C 531  $2.7 \times 10^{-5}$  in/in/°F

### FLEXURAL STRENGTH:

ASTM C 580 2,900 psi

### ABRASION RESISTANCE:

ASTM D 4060 CS 17 Wheel, 1000 cycles 0.05g loss

### ADHESION:

ASTM D 4541 400 psi (100% concrete failure)

### TEMPERATURE RESISTANCE:\*

Continuous Exposure: 180°F

Intermittent Spills: 220°F

VOC: 9 g/l

### SPEED OF CURE:

	50°F	70°F	90°F
Light Traffic	12-14 hrs	6-8 hrs	3-5 hrs
Full Traffic	24-36 hrs	12-16 hrs	8-10 hrs
Full Chemical Cure	5-7 days	3-5 days	1-2 days

The applied colors may differ from the examples shown. For a full color chart and samples, contact your local Tremco rep.

## Products Included In This System

### 61 lb Kit Includes:

TREMfloor Urethane Cement Base A 10 lbs Double Pack  
TREMfloor Urethane Cement Hardener B 10 lbs Double Pack  
TREMfloor Urethane Cement SL Filler C 40 lbs  
(2) 1lb. Pigment Packs

### Coverage Rate:

TREMfloor Urethane Cement SL  
63 sq ft /unit at 1/8"

### Topcoat Options:

TREMfloor Urethane Cement FC at 120 sq ft/kit  
TREMfloor Urethane Cement FCUV at 230 sq ft/kit  
TREMfloor Urethane Cement SR Sealer at 120 sq ft/kit

## Substrate Requirements

Concrete or screed substrate should have a minimum of 3,000 psi compressive strength, free from laitance, dust and other contamination. The substrate should be dry to ASTM requirements and free from excessive moisture vapor transmission.

## Polygiene®

All TREMfloor Urethane Cement systems include a built in high performance antimicrobial, Polygiene®. This silver-ion based additive inhibits the growth of bacteria and molds and guards against surface degradation and odors caused by these microorganisms.

## Color Stability

TREMfloor Urethane Cement is not color fast and may change color over time (exhibits a yellowing effect). Color change depends on the UV light and heat levels present as such the rate of change cannot be predicted. This is more noticeable in light colors and grays, but does not compromise the product's chemical resistance or physical characteristics. Special customized colors and designs can be produced to special order. For applications exposed to UV light, apply TREMfloor Urethane Cement FC UV.

## Technical Profile

The figures and test results shown overleaf are typical properties achieved in laboratory tests at 75°F and at 50% Relative Humidity.

## Installation

Detailed application instructions are also available through [tremcosealants.com](http://tremcosealants.com).

## Environmental Health & Safety

The finished system is assessed as non-hazardous to health and the environment. TREMfloor Urethane Cement systems are USDA/FDA compliant & HACCP International certified. The long service life and seamless surface reduce the need for repairs and maintenance. Environmental and health considerations are controlled during manufacture and application of the products.

## Warranty

Tremco warrants its Products to be free of defects in materials but makes no warranty as to appearance or color. Since methods of application and on-site conditions are beyond our control and can affect performance, Tremco makes no other warranty, expressed or implied including warranties of MERCHANTABILITY and FITNESS FOR A PARTICULAR PURPOSE with respect to Tremco Products. Tremco's sole obligation shall be, at its option, to replace or refund the purchase price of the quantity of Tremco Products proven to be defective, and Tremco shall not be liable for any loss or damage.

Tremco Construction Products Group (CPG) brings together Tremco CPG Inc. and its Dryvit and Nudura brands; Willseal; Prebuck LLC; Tremco Barrier Solutions, Inc.; Weatherproofing Technologies, Inc. and its Pure Air Control Services and Canam Building Envelope Specialists offerings; and Weatherproofing Technologies Canada, Inc.



[tremcosealants.com](http://tremcosealants.com) | 800.321.7906



Construction Products Group

3735 Green Rd. | Beachwood, OH 44122  
800.321.7906 | [tremcocpg.com](http://tremcocpg.com)